

State of Wyoming Corner Record

(In compliance with the *CORNER PERPETUATION AND FILING ACT*, Wyoming Statutes, 1977, Section 36-11-101, et. seq., and the Rules and Regulations of the Board of Registration for Professional Engineers and Professional Land Surveyors)

Reverse side of this form may be used if more space is needed.

Record of original survey and citation of source of historical information (if corner is lost or obliterated). Description of corner monumentation evidence found and/or monument and accessories established to perpetuate the location of this corner. Sketch of relative location of monument, accessories, and reference points with course and distance to adjacent corner(s) (if determined in this survey). Method and rationale for reestablishment of lost or obliterated corner.

1/4 Corner of Sections 2 and 11, T.12N., R.63W., 6th P.M., Laramie County, Wyoming.

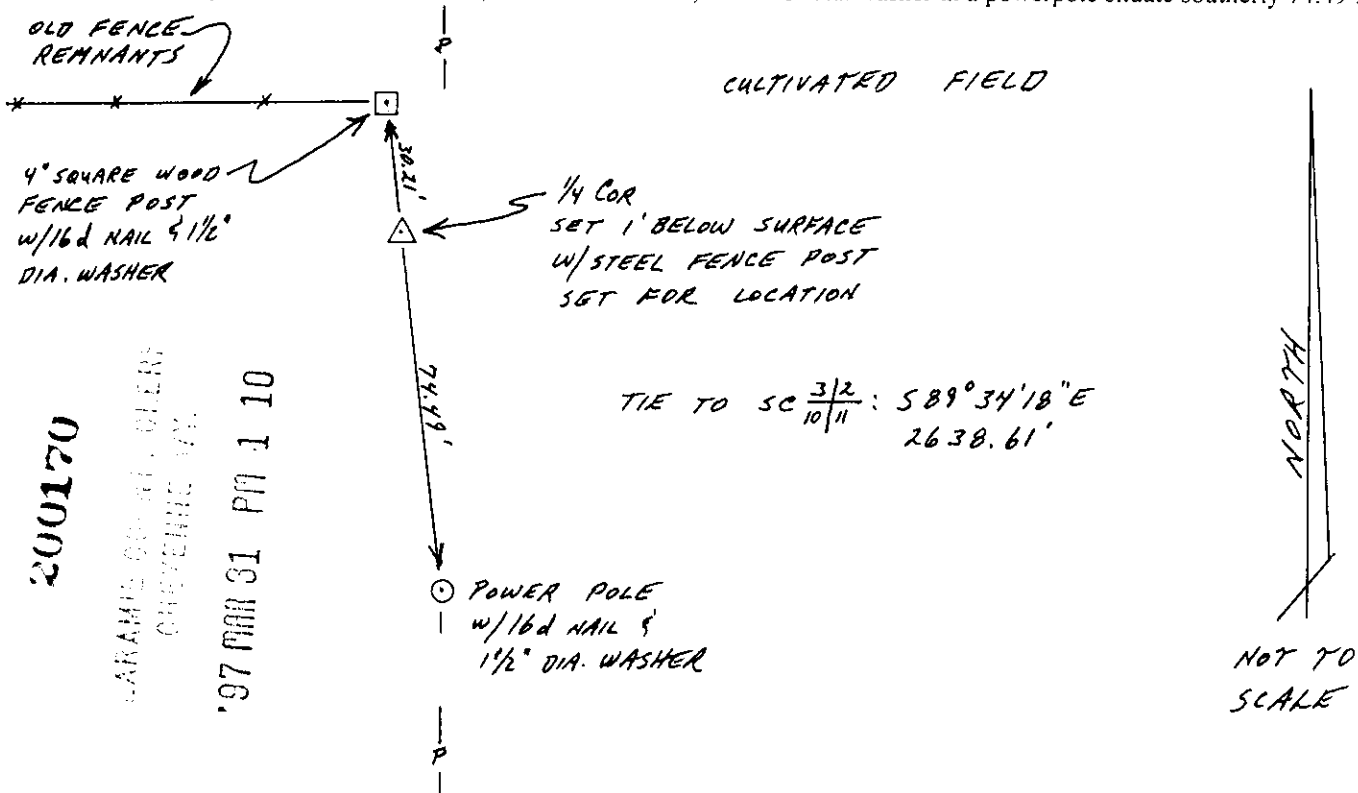
G.L.O. RECORD: 1" dia. X 36" long iron pipe with 2" brass cap: Edwin H. VanAntwerp, 1911.

OTHER RECORDS: none.

FOUND: G.L.O. monument with the top six inches of the pipe and brass cap bent at approximately 90°. The remainder of the iron pipe remained vertical in the ground. This monument was situate in line with a north-south running powerline. This original monument was extracted from the ground and laid horizontally in the ground alongside the replacement monument approximately one foot below ground level as a memorial.

SET: 30" long No.5 rebar with a 2½" dia. aluminum survey cap stamped in accordance with B.L.M. Manual of Instructions and with "WYO. P.L.S. NO. 4828". This corner was reestablished by replacement in the vertical hole created by extraction of the original disturbed monument.

Also set a 16d nail with a ½" dia. washer in a 4" square fence post at the easterly terminus of an old fenceline and situate northerly of the corner 30.21 feet; also set a 16d nail, with ½" dia. washer in a powerpole situate southerly 74.49 feet.



200170

LARAMIE COUNTY, WYOMING
CHEYENNE, WY.

'97 MAR 31 PM 1 10

TIE TO SC $\frac{3}{2}$ / $\frac{10}{11}$: 589°34'18"E
2638.61'

NOT TO SCALE

Date of Field Work: March 1997
 Office Reference: _____
 Firm/Agency, Address
John J. Studley, WY P.L.S. No. 4828
3509 Frontier Street
Cheyenne, Wyoming 82001
 Telephone Number: (307) 634-3358

This corner record was prepared by me or under my direction and supervision.

Corner Name: 1/4 Corner Sections: 2 & 11, T. 12 N., R. 63 W., 6th P.M.
 Cross-Index No. E-19
 SBRPEPLS/PLSW: March 1994

CROSS INDEX DIAGRAM

	1	2	3	4	5	6	7	8	9	10	11	12	13	14	15	16	17	18	19	20	21	22	23	24	25	
A																										
B																										
C			6		5			4						3						2						1
D																										
E																										
F																										
G						7		8						9						10						12
H																										
J																										
K																										
L																										
M																										
N																										
O																										
P																										
Q																										
R																										
S																										
T																										
U																										
V																										
W																										
X																										
Y																										
Z																										